

P1260A

Small tube fiber laser cutting machine



Small size solves big problems

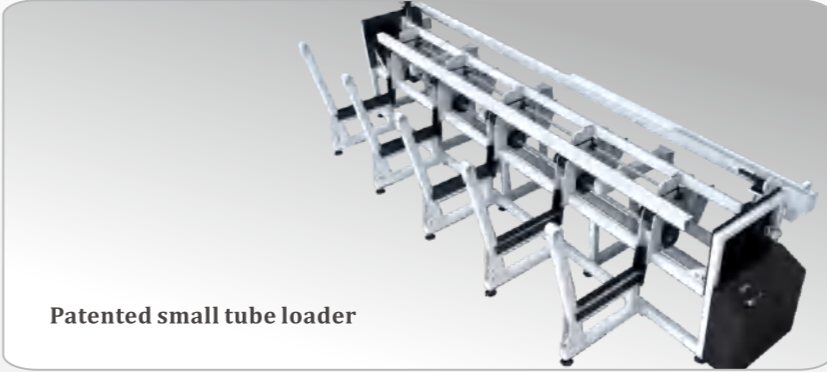
- ✔ Perfectly solve the processing of tubes less than 100mm dia
- ✔ Original automatic feeding and distributing system
- ✔ Speed- always one step faster
- ✔ Accuracy- always better than others

Technical Parameters

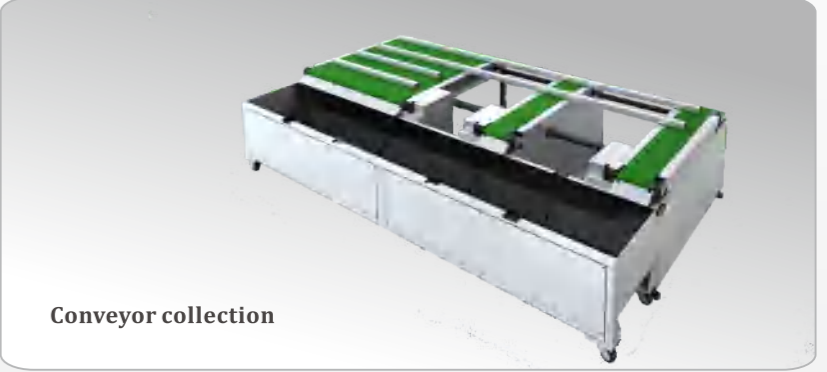
Pipe diameter range: round ϕ 20mm- ϕ 120mm;
 square 20mm*20mm- 80mm*80mm
 Feeding size: 800mm*800mm*6200mm
 Laser power: 1500W/2000W/3000W/4000W

Max position speed: X axis 150m/min, Y axis 150m/min
 Max rotate speed: 150r/min
 Positioning accuracy: 0.05mm
 Acceleration: 1g

Machine Details



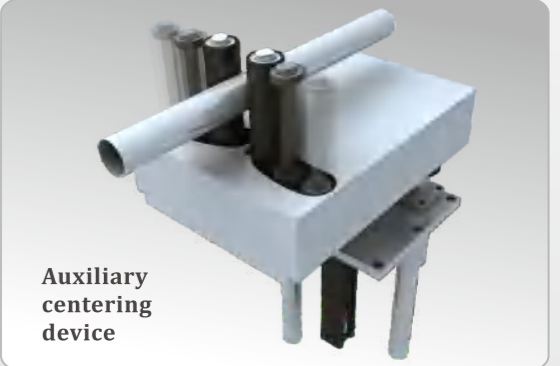
Patented small tube loader



Conveyor collection



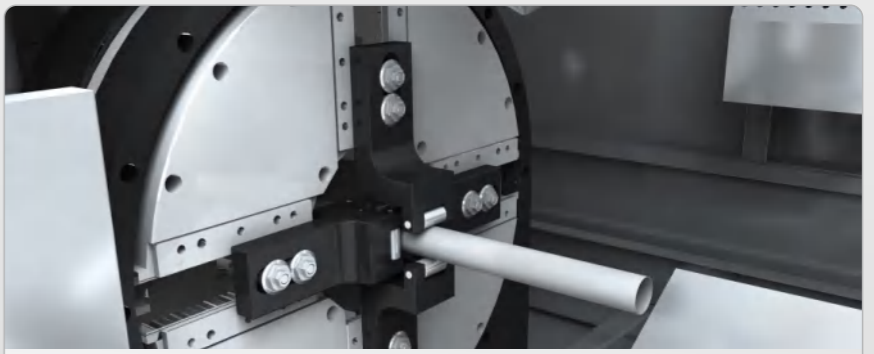
Small footprint



Auxiliary centering device



Full servo dynamic support
Perfect fit all kinds of pipes



Double row of jaws
Guarantee of accuracy